

PLASTER-IN PROFILES: P05D

CHARACTERISTICS

Profile for recessed plaster-in installation on one side with emission in two directions, ideal for highlighting corners and architectural features or linear furnishings. Recessed support along the profile for perfect stability.

CAN BE USED WITH LED STRIPS WITH MAXIMUM WIDTH:
10 mm.

MAXIMUM POWER

24W/m

MATERIALS

6063 aluminium profile with white PMMA screen.

ACCESSORIES INCLUDED

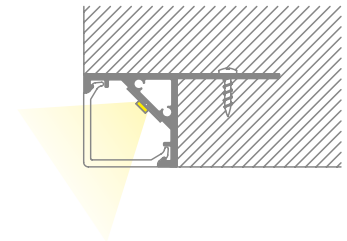
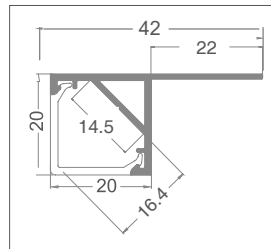
Every 3 metre bar is complete with 3 end caps (with and without hole).

INSTALLATION

For recessed installation in plasterboard or ceilings with tiles. Cabling can be in line with the profile or exit the bottom of the profile.

PACKAGE

Supplied in packages of 5 bars, each one measuring 3 meters complete with screen and accessories. Spare accessories available with separate code.



Cutting Project profiles to size*:

fixed cost of piece work

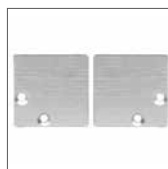
VA04

* Includes mounting accessories.

IP20

art	Description	L1	H	L	8011905	
P05D-S-PF-300	profile complete with PMMA screen and accessories	42	20	3000	913168	1 / 5

MAX 14mm ♦ To be discontinued



art	Description	8011905	
P05D-A-EC	3+3 metal end caps	913175	1

♦ To be discontinued